

# Fall Prevention & Patient Monitoring Equipment

Follow the steps below to set-up your falls equipment:

1



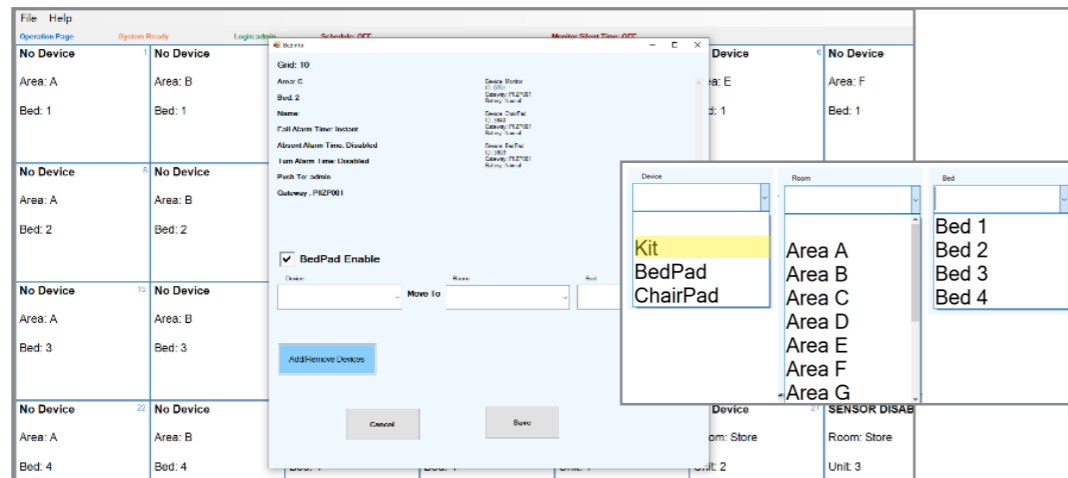
**CHECK THAT THE 'ALARM SET' NUMBERS ON EACH ITEM MATCH**

2



**TO DEACTIVATE SLEEP MODE PRESS & HOLD RESET UNTIL LCD SHOWS 'ON'. IT WILL NOW APPEAR AS A BLUE TILE 'TEST PAD' IN ITS STORE LOCATION.**

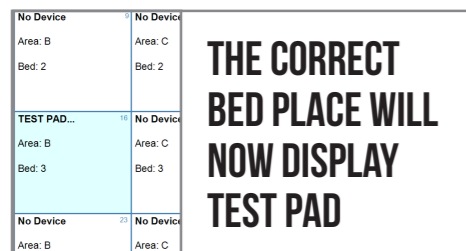
3



**MOVE SET TO CORRECT BED PLACE:**

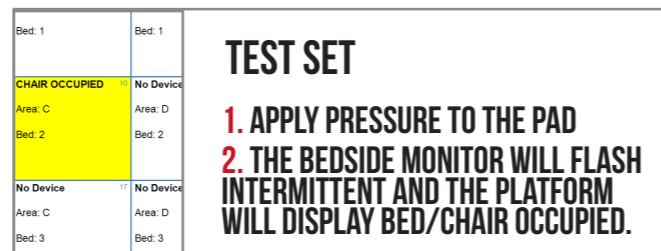
1. DOUBLE TAP THE TILE WHERE THE CURRENT SET IS AND A POP-UP BOX WILL APPEAR.
2. TAP ARROW ON SIDE OF THE DROPDOWN BOXES TO SELECT PREFERRED DEVICE, ROOM & BED NO.
3. TAP SAVE.

4



**THE CORRECT BED PLACE WILL NOW DISPLAY TEST PAD**

5



**TEST SET**

1. APPLY PRESSURE TO THE PAD
2. THE BEDSIDE MONITOR WILL FLASH INTERMITTENT AND THE PLATFORM WILL DISPLAY BED/CHAIR OCCUPIED.

6

**TRIGGER ALARM**

1. RELEASE PRESSURE FROM THE PAD.
2. AN AUDIBLE AND VISUAL ALERT WILL BE DISPLAYED ON THE SCREEN AND A DUPLICATED ALERT ON THE STAFF PAGERS.

| Location      | Alarm     | Time | Ack By |
|---------------|-----------|------|--------|
| Area C/ Bed 2 | CHAIRP... | 1    |        |

7

**RESET ALARM AT THE BEDSIDE**

1. REAPPLY PRESSURE TO PAD OR PRESS RESET ON THE COMPANION MONITOR.



8

**POSITION PADS & MOUNT BEDSIDE MONITOR AT FOOT OF BED**

1. POSITION PAD AT HIPS ACROSS WIDTH OF BED.
2. SEAT SENSOR PAD - CAN BE PLACED OVER OR UNDERNEATH CHAIR CUSHION.
3. TEST PADS AT BEDSIDE - APPLY PRESSURE & LISTEN FOR BEEPS. RELEASE PRESSURE & LISTEN FOR ALARM TONE.



9

**ONCE PATIENT IS DISCHARGED FOLLOW THE INSTRUCTIONS FROM STEP 3.**

1. DOUBLE TAP ON CURRENT ALARM LOCATION
2. SELECT:  
 DEVICE DROPDOWN = KIT (ALWAYS)  
 ROOM/AREA = STORE  
 BED/UNIT = CORRECT SET NUMBER AS ON THE DEVICE
3. PRESS SAVE

10

**SLEEP MODE**

1. PRESS & HOLD PAUSE & RESET ON THE COMPANION AT THE SAME TIME (5 SECONDS) UNTIL YOU HEAR A DOUBLE BEEP & 'SL' APPEARS ON THE SCREEN.
2. RETURN TO STORAGE FACILITY ONCE CLEARED.

